



BOND PROGRAM AUSTIN ISD 2022

Travis ECHS CAT Meeting #6

October 11, 2023



CAT Meeting 6 Roadmap



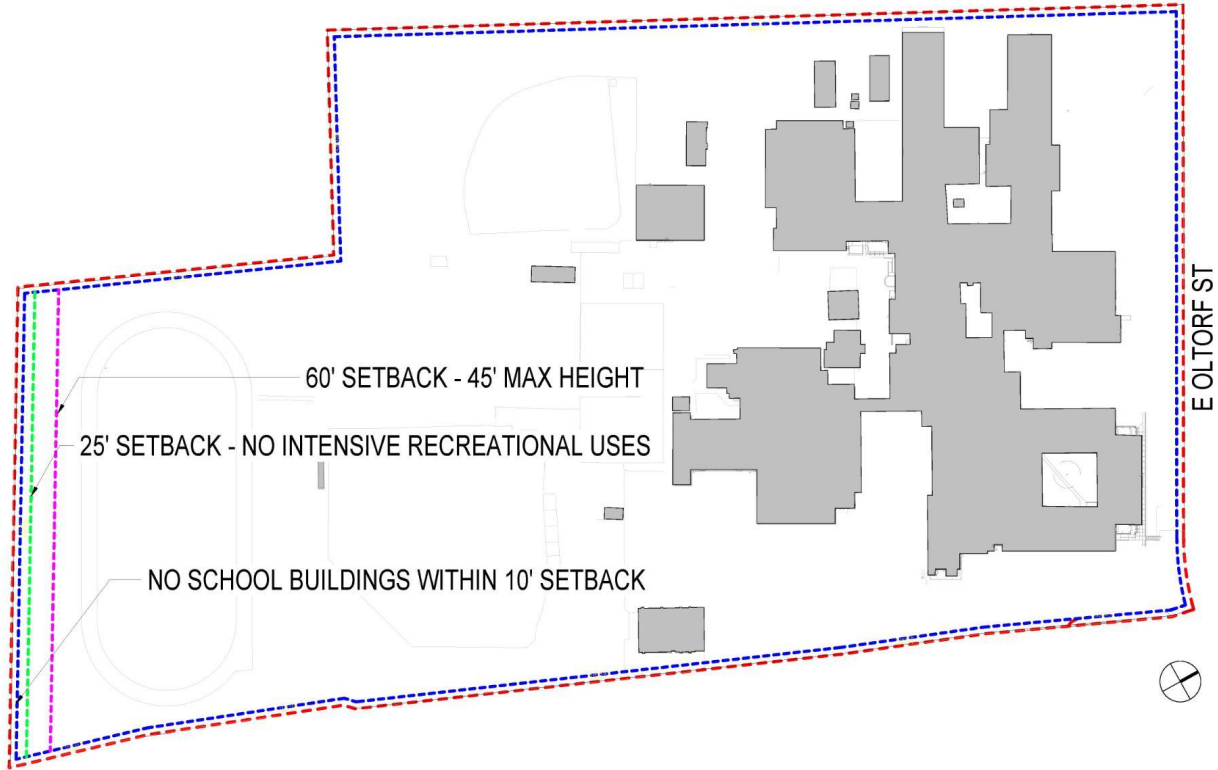
- Site Analysis
- Design Explorations
- Synthesis

Site Analysis

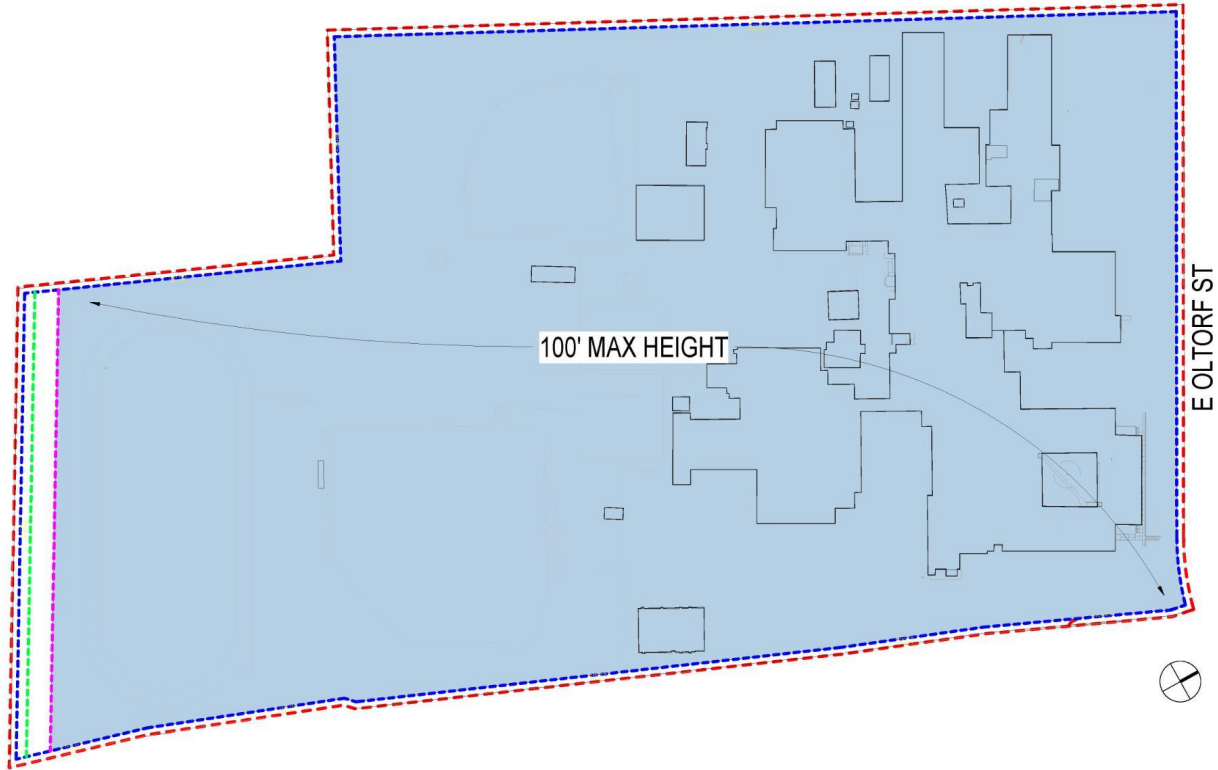
Site Analysis - Building



Site Analysis - Setbacks



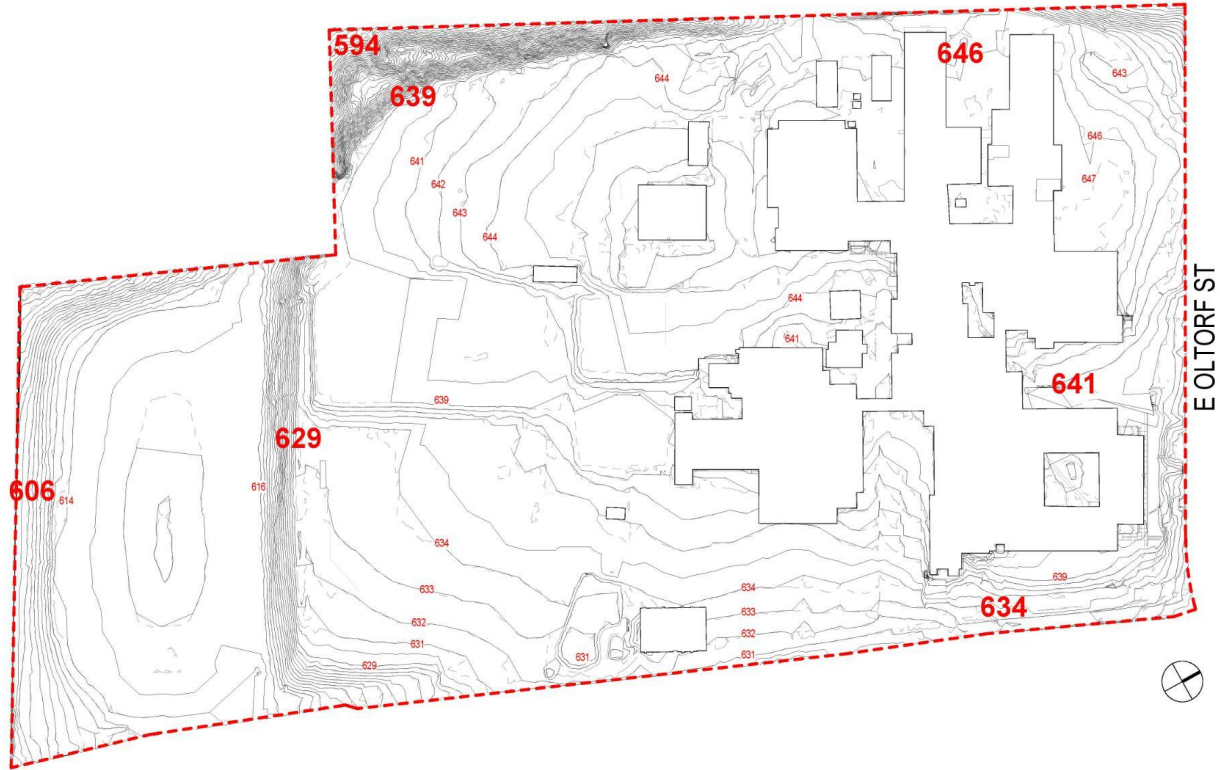
Site Analysis - Setbacks



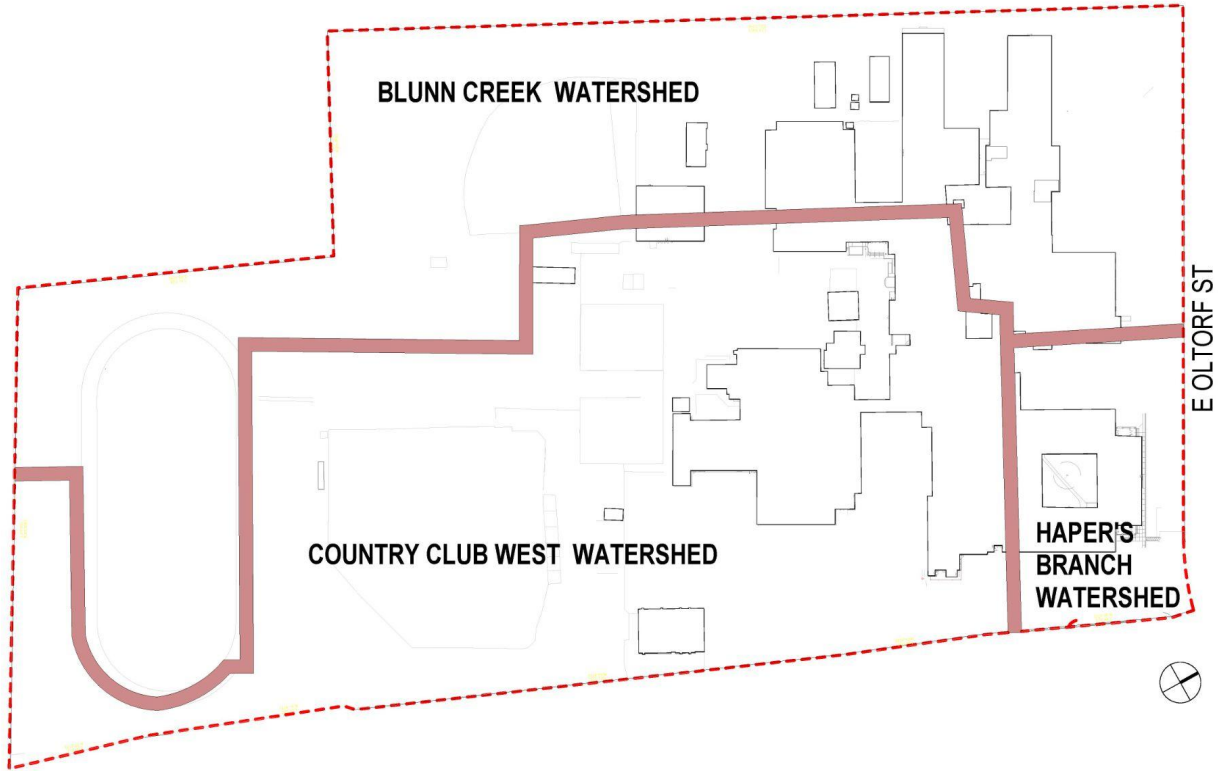
Site Analysis - Trees



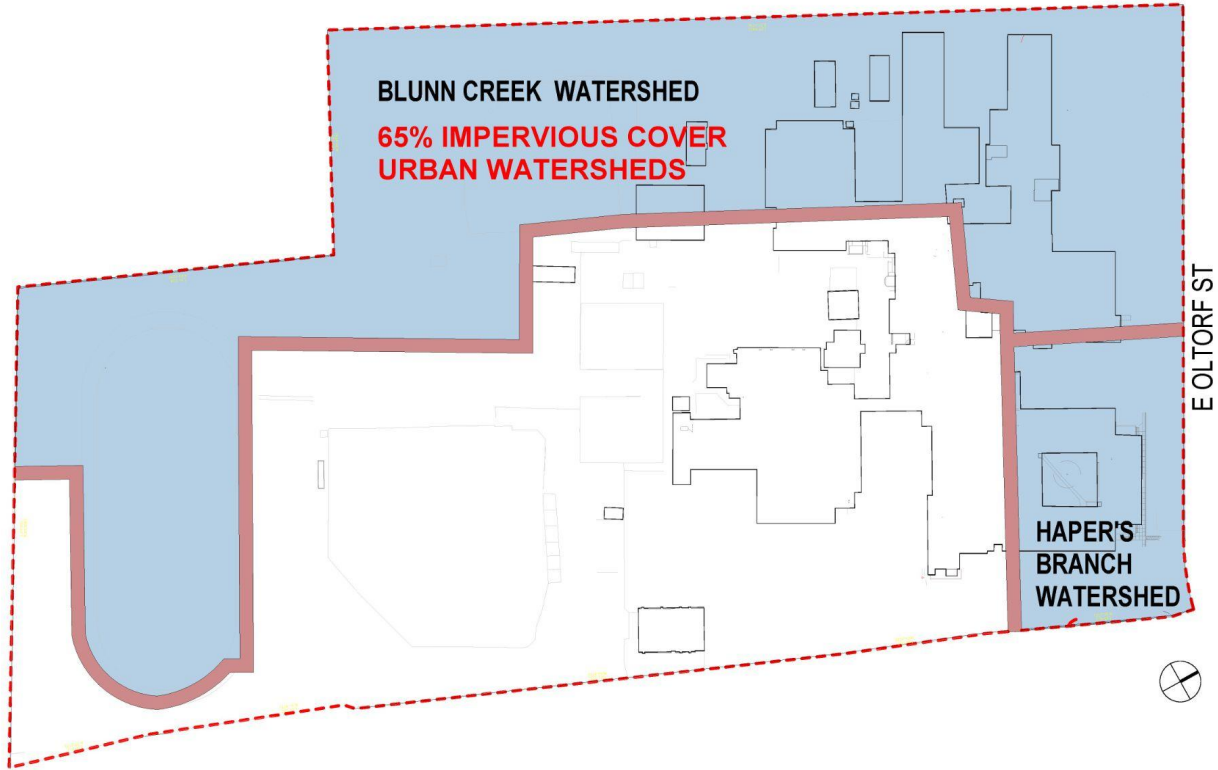
Site Analysis - Topography



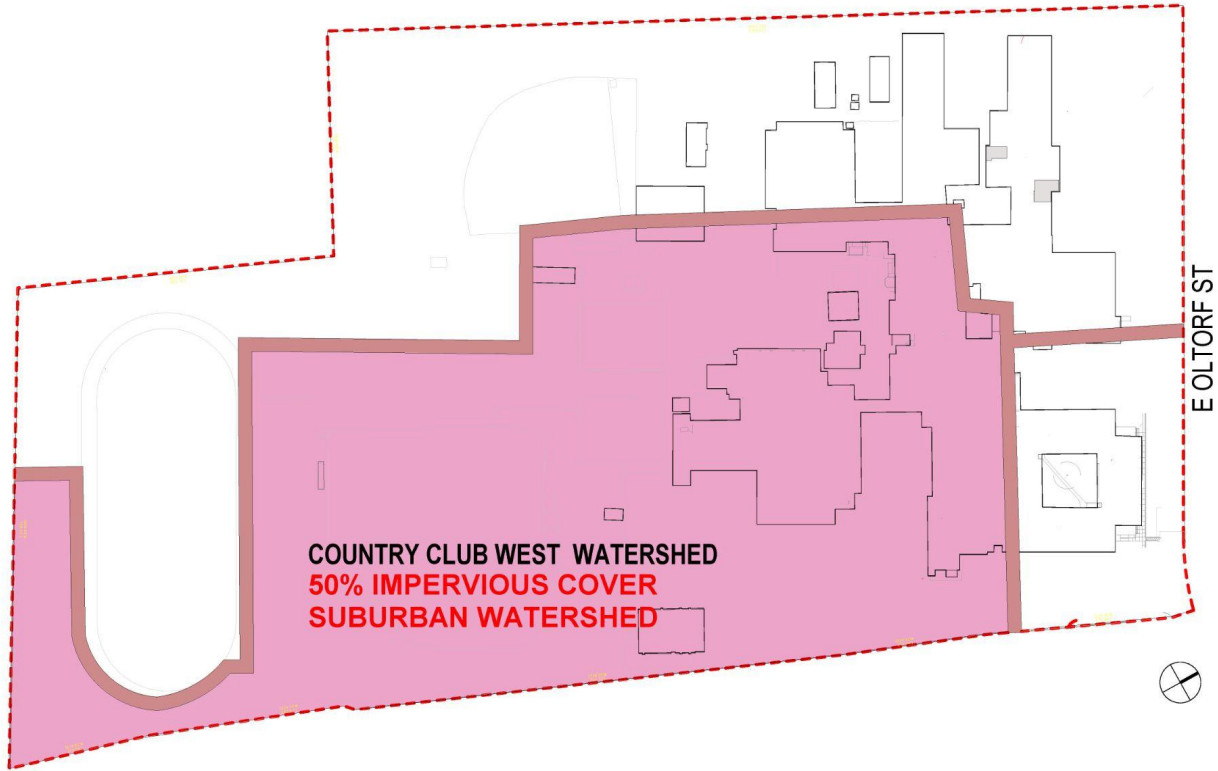
Site Analysis - Impervious Cover



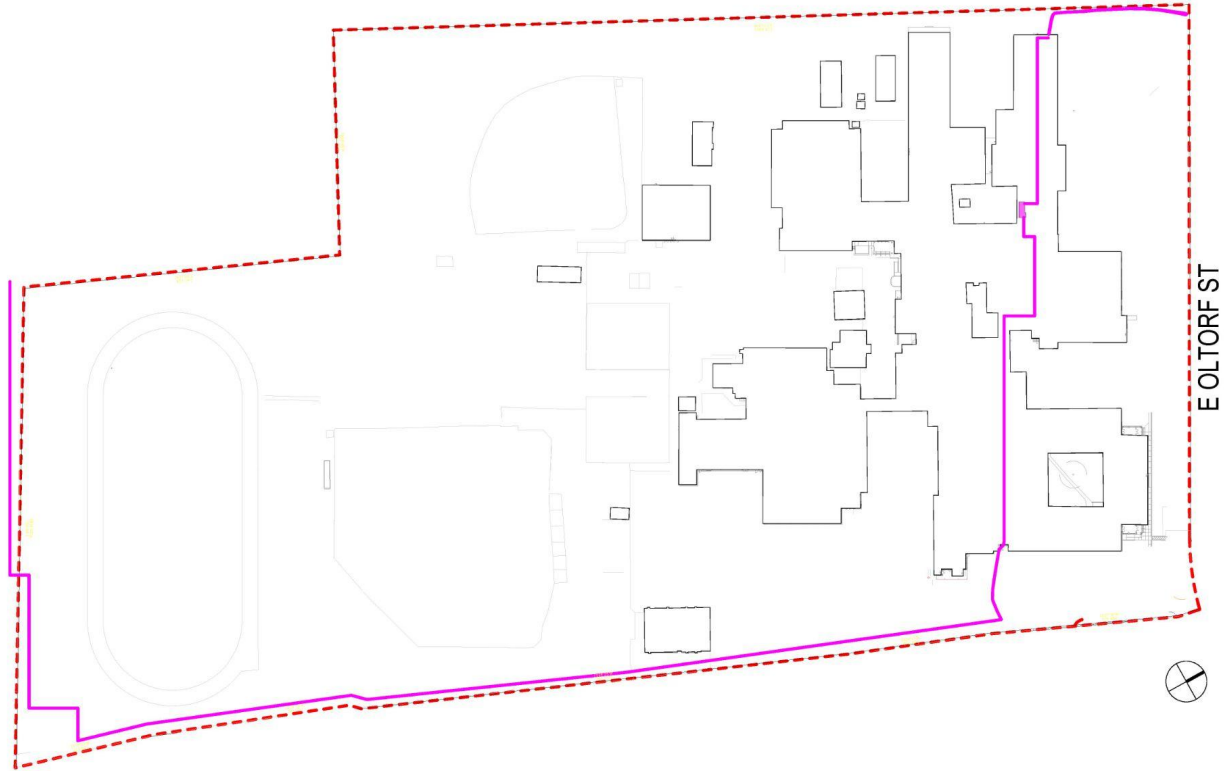
Site Analysis - Impervious Cover



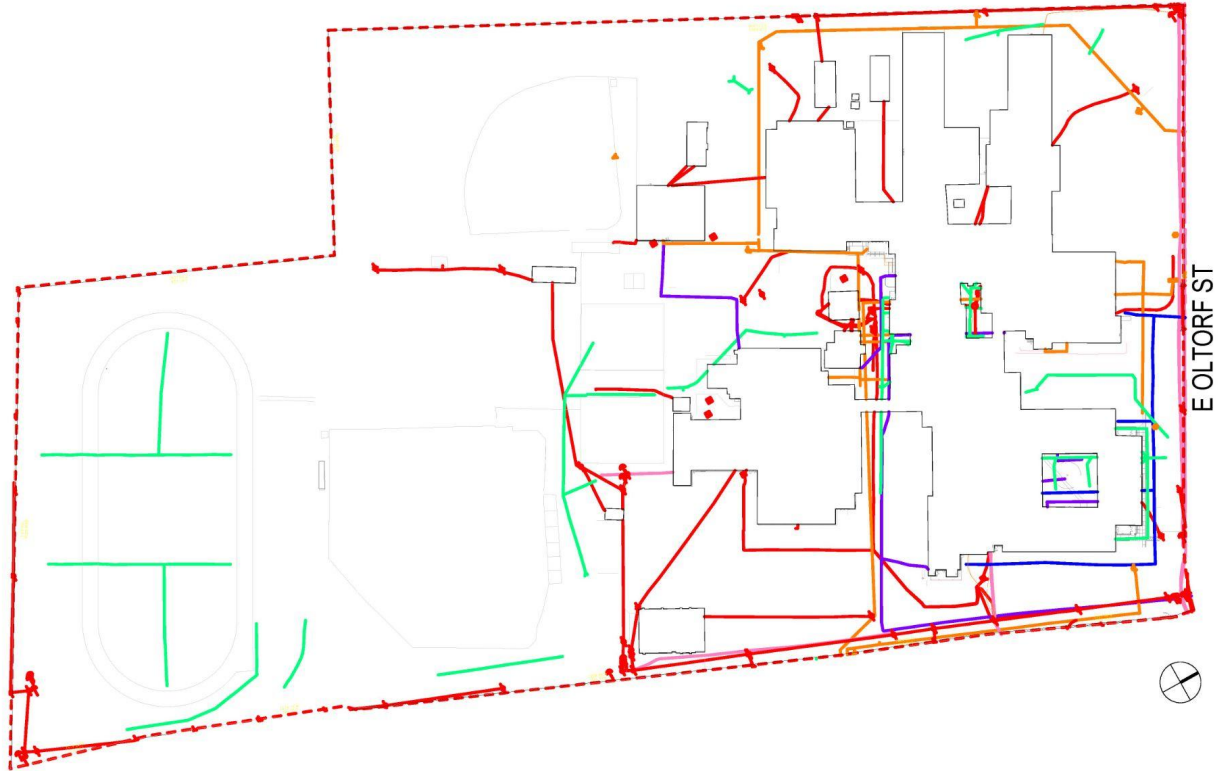
Site Analysis - Impervious Cover



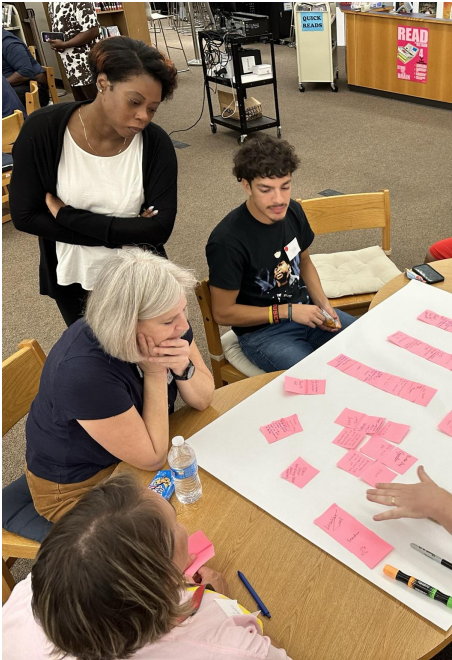
Site Analysis - GAATN



Site Analysis - Utilities Combined



Design Iterations



Priorities Identified



#1 Enhance student success and excellence across programs, including academics, CTE, Fine Arts and Athletics

Priorities Identified



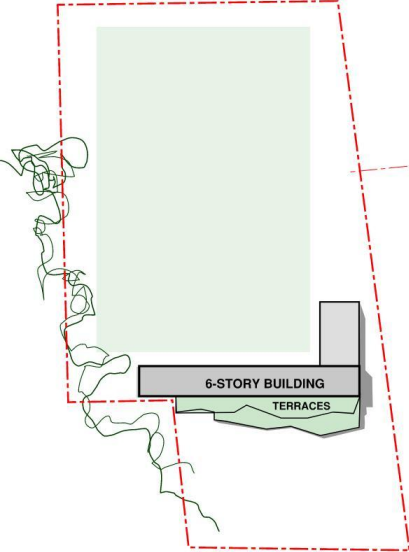
#2 Strengthen student and faculty **relationships at Travis ECHS and with the broader **community** by centering social spaces and community involvement**

Priorities Identified

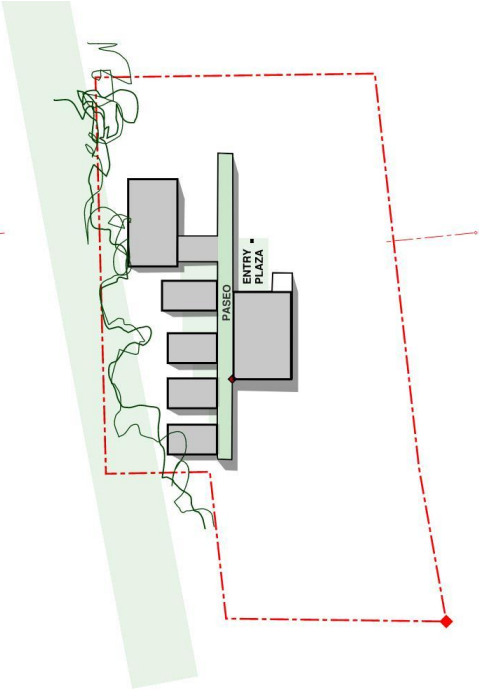


#3 Celebrate Travis ECHS's amazing site and location by building a modern, urban school with strong connections to **nature and its **surrounding city****

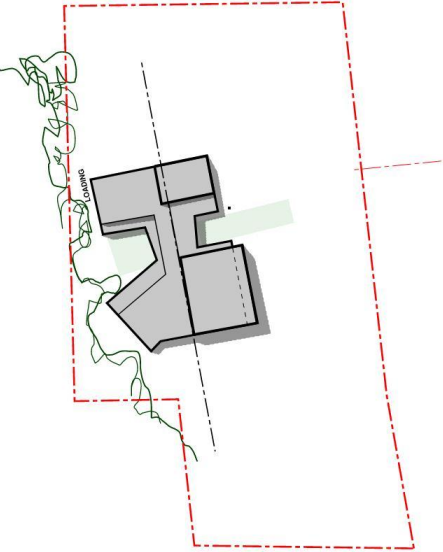
Community



Nature



Excellence



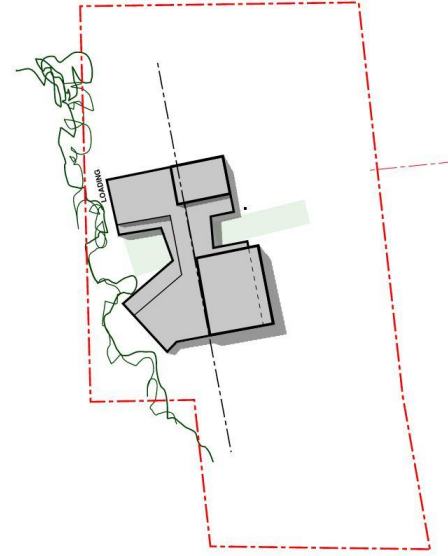
Hillside



Edge



Courts



Disclaimers

- **We don't have to pick a winner**

We can incorporate feedback about what is working from all schemes.

- **Nothing is resolved or perfect**

These are rough drafts to get your feedback on the big ideas; they still need a lot of work!

- **Nothing is final**

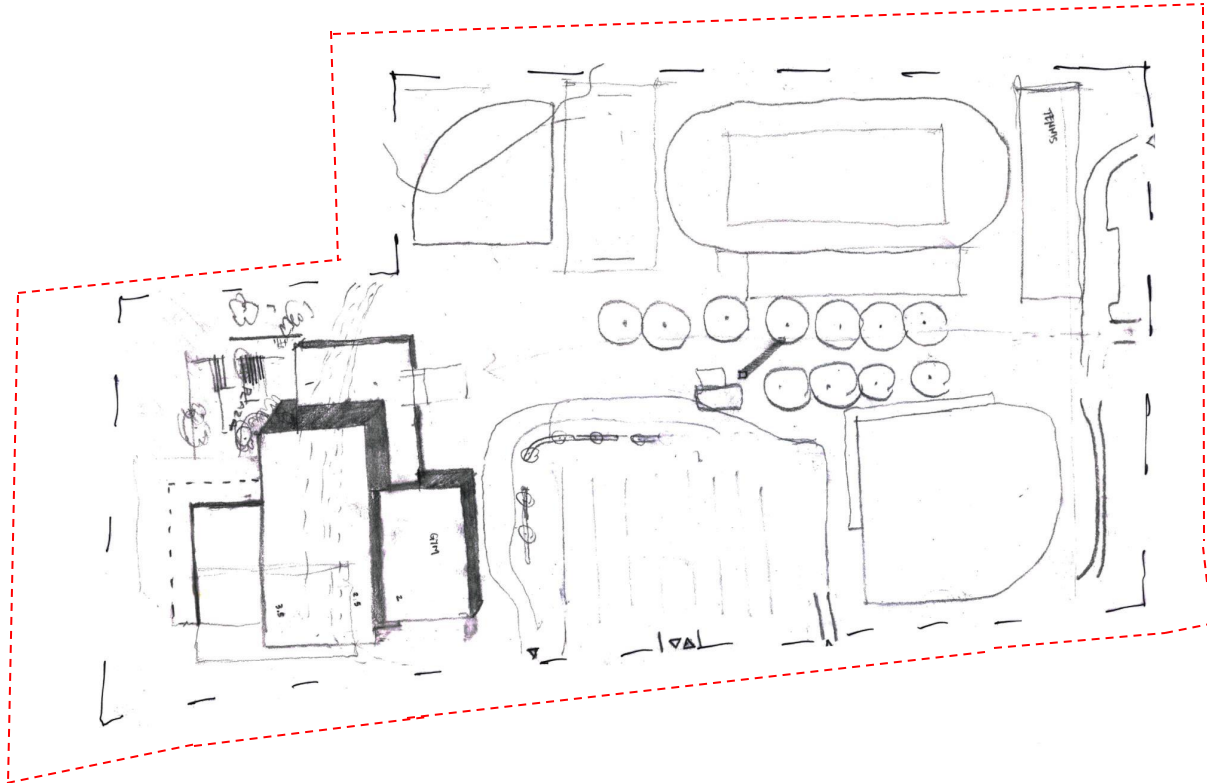
We'll still have many opportunities to adjust program adjacencies, centralized vs. dispersed distribution, site circulation, etc.

- **Time is finite**

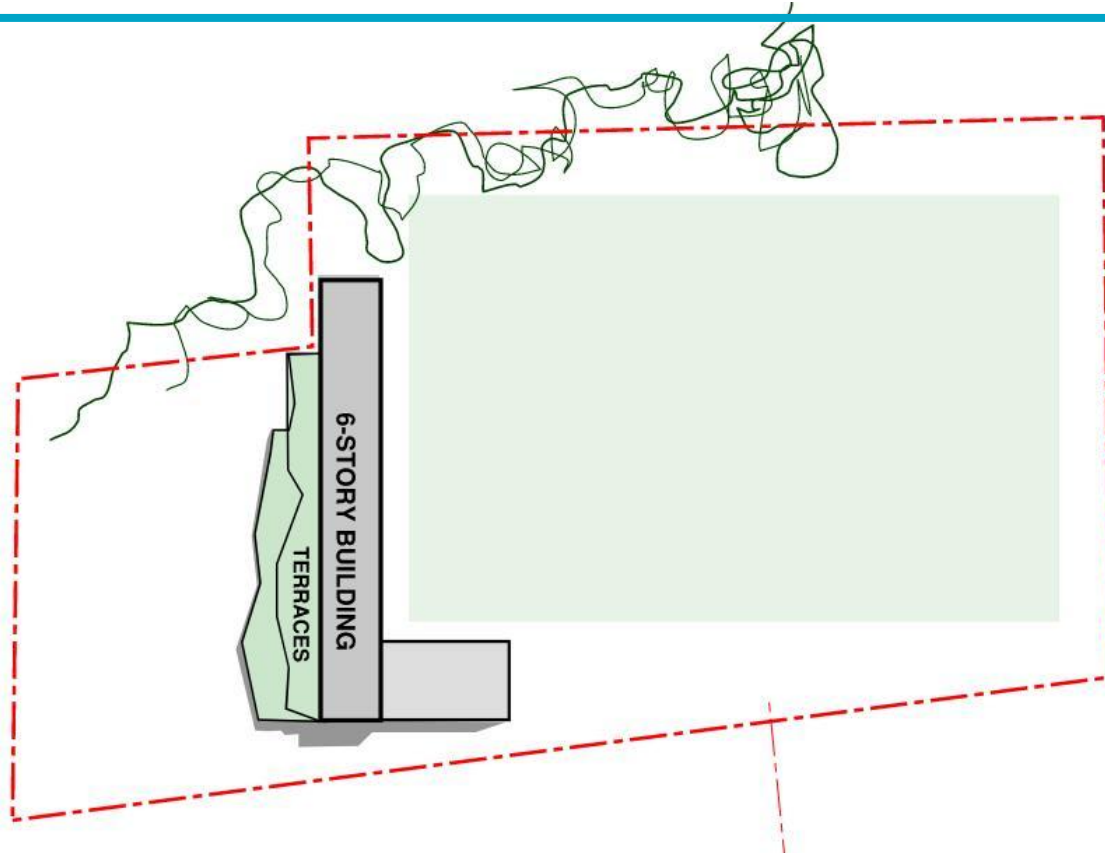
We will have to keep a strict schedule to get through all options.

Hillside Terrace

Hillside Terrace



Hillside Terrace



Hillside Terrace



Hillside Terrace



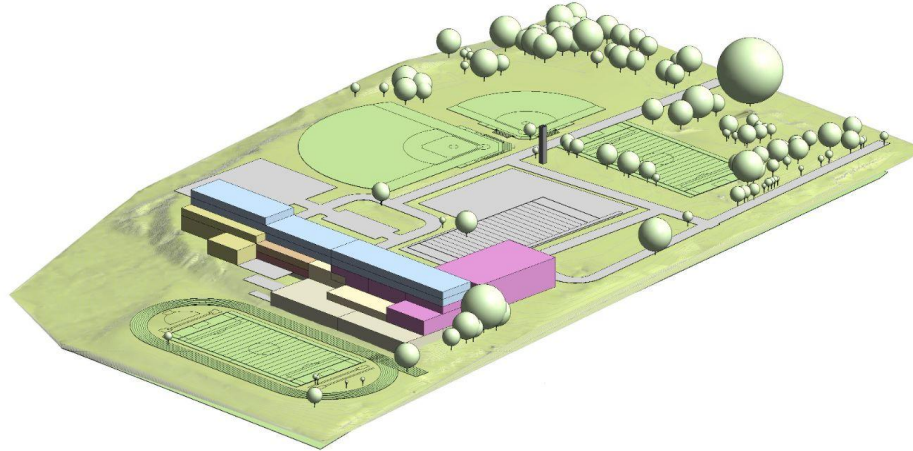
Hillside Terrace



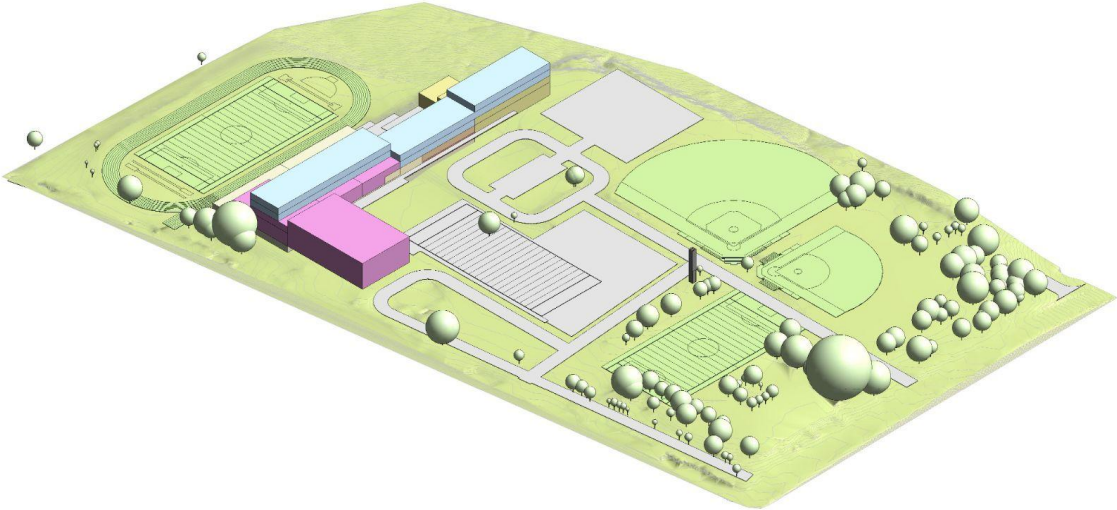
Phasing Overlap - Hillside



Hillside Terrace



Hillside Terrace



Hillside Terrace

+

compact footprint
no overlap
views
outdoor terraces

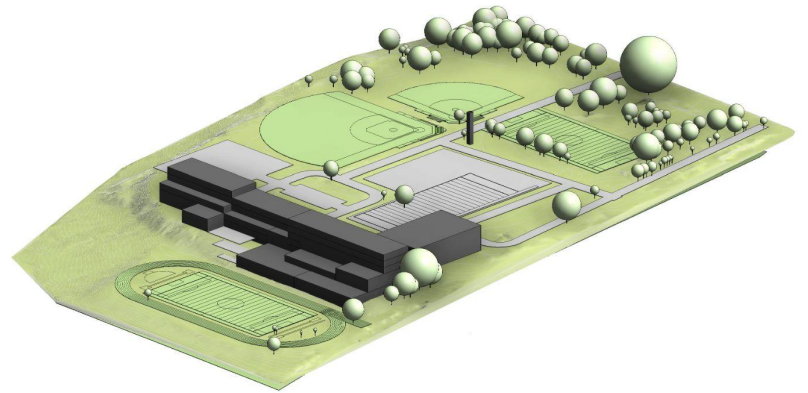
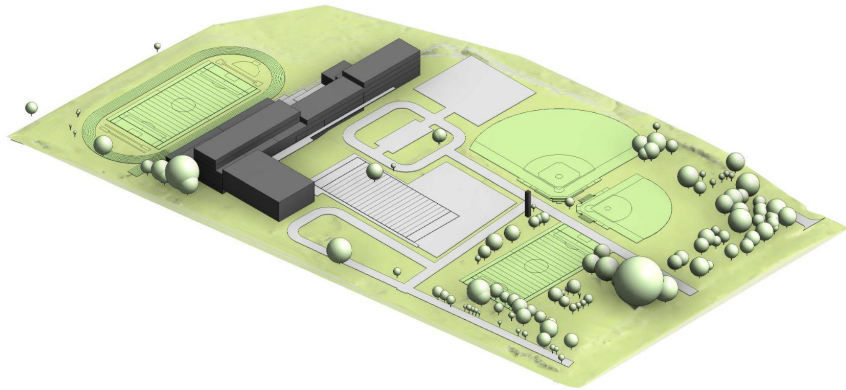
-

remoteness
(cars, people, utilities)
courtyards
public presence

?

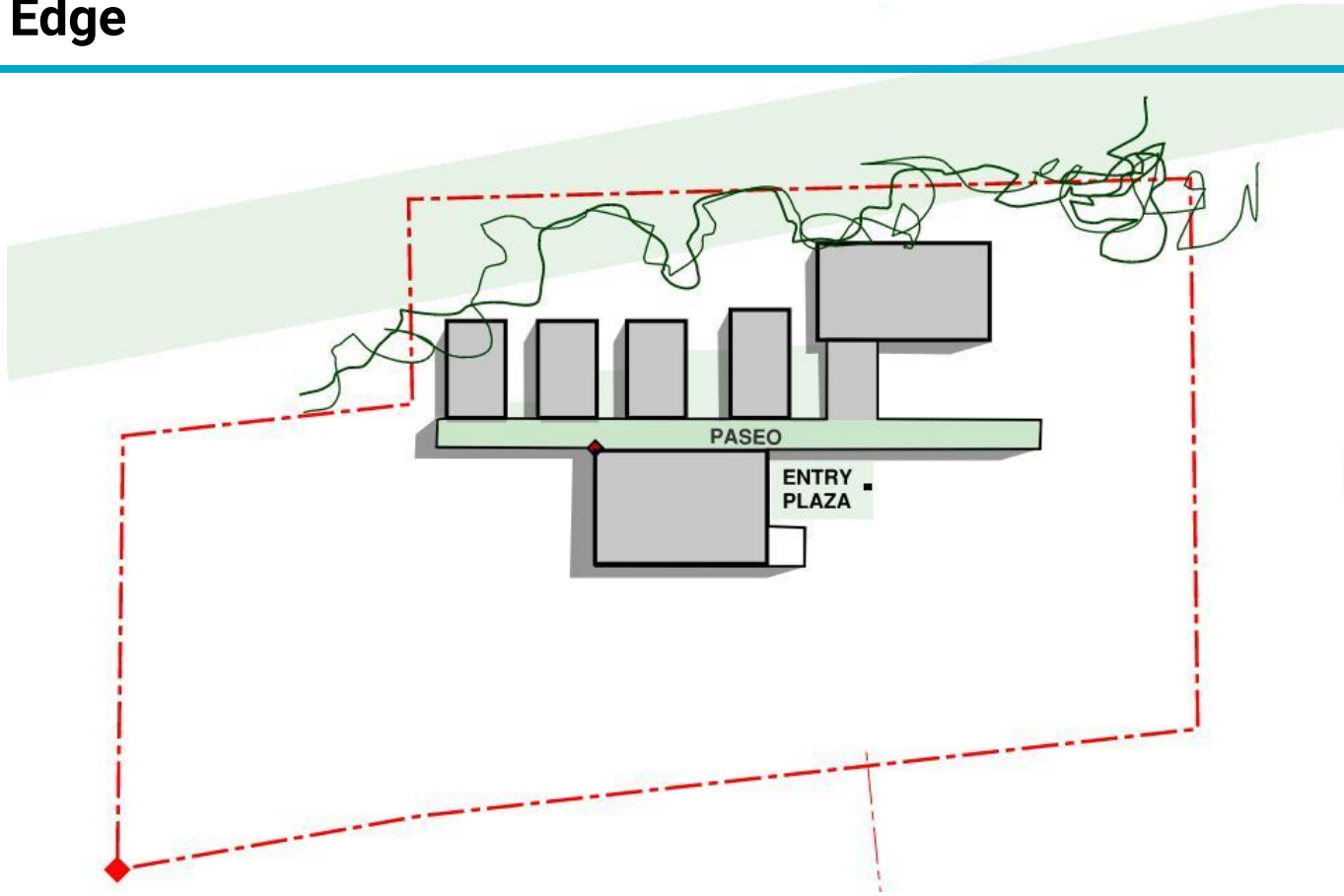
6 stories
public fields
far from Oltorf
tower as satellite

Hillside Terrace



Natural Edge

Natural Edge



Natural Edge / Spine



Natural Edge / Spine



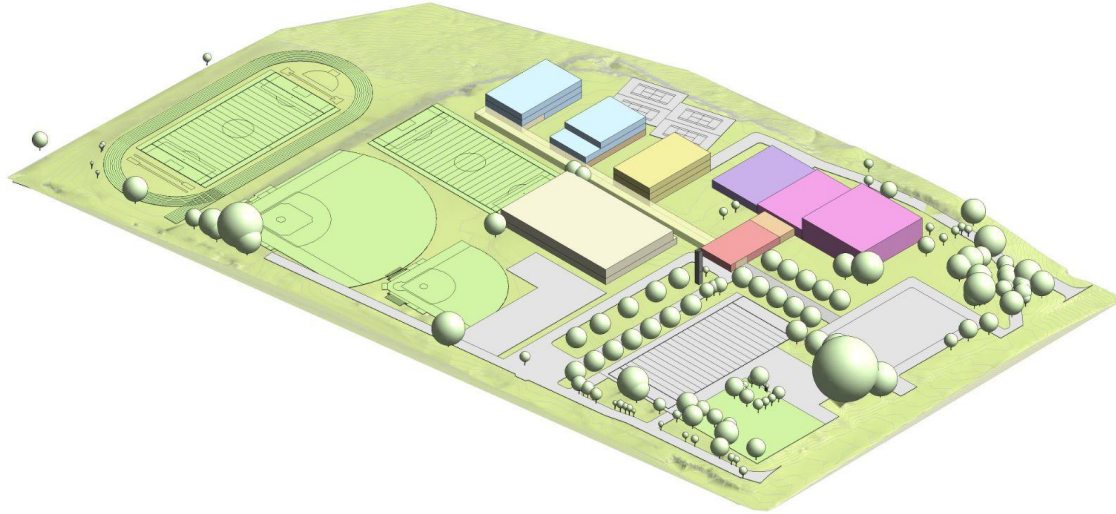
Natural Edge / Spine



Phasing Overlap - Natural Edge / Spine



Natural Edge / Spine



Natural Edge / Courtyards



Natural Edge / Courtyards



Natural Edge / Courtyards



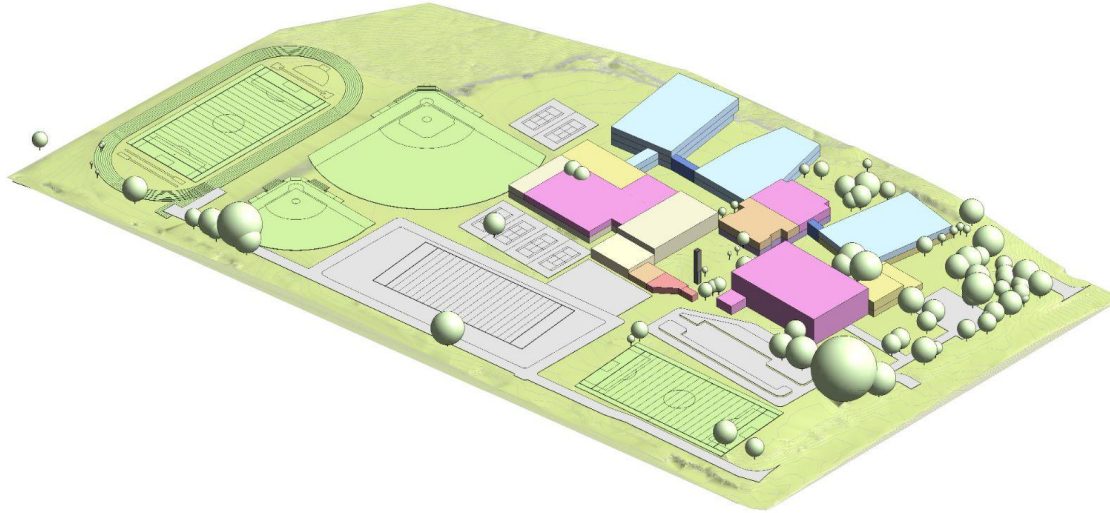
Natural Edge / Courtyards



Phasing Overlap - Natural Edge / Courtyards



Natural Edge / Courtyards



Natural Edge

+

tower as landmark
outdoor space
clear wayfinding

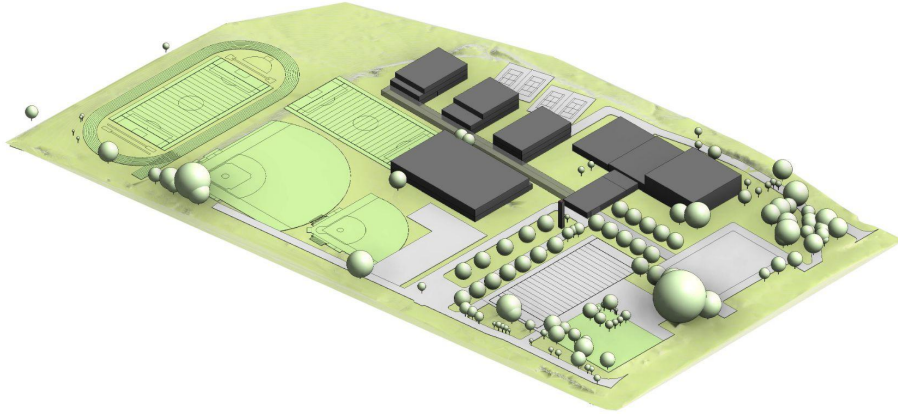
-

moderate overlap
limited parking

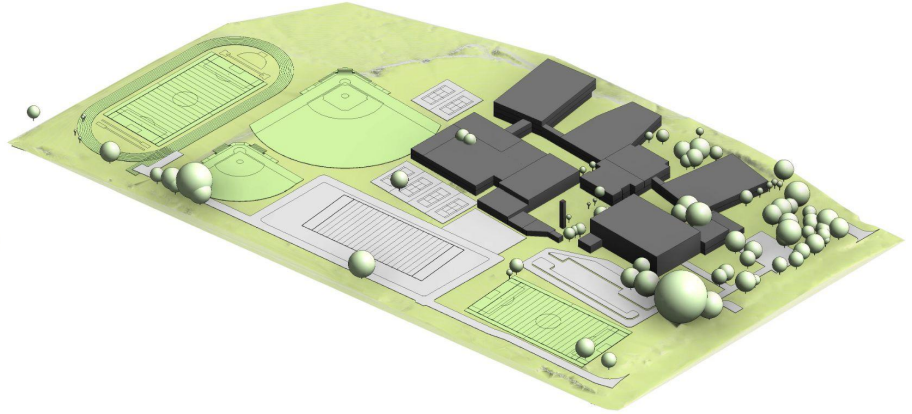
?

adaptive reuse
outdoor circulation

Natural Edge



Natural Edge / Spine



Natural Edge / Courtyards

Light Courts

Light Courts



Light Courts / 2



Light Courts / 2



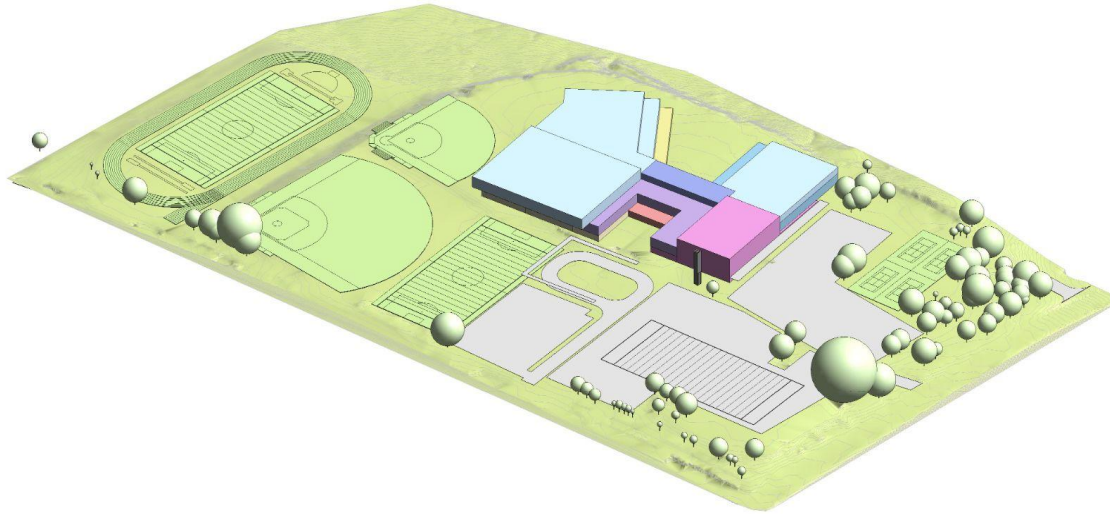
Light Courts / 2



Phasing Overlap - Light Courts / 2



Light Courts / 2



Light Courts / Many



Light Courts / Many



Light Courts / Many



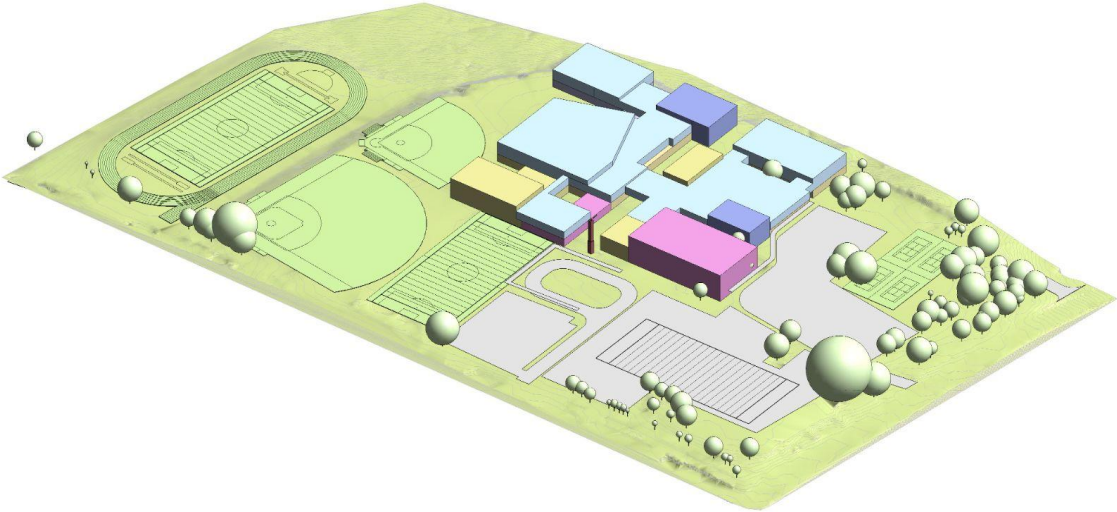
Light Courts / Many



Phasing Overlap - Light Courts / Many



Light Courts / Many



Light Courts

+

terraced courts
common space
minimal overlap

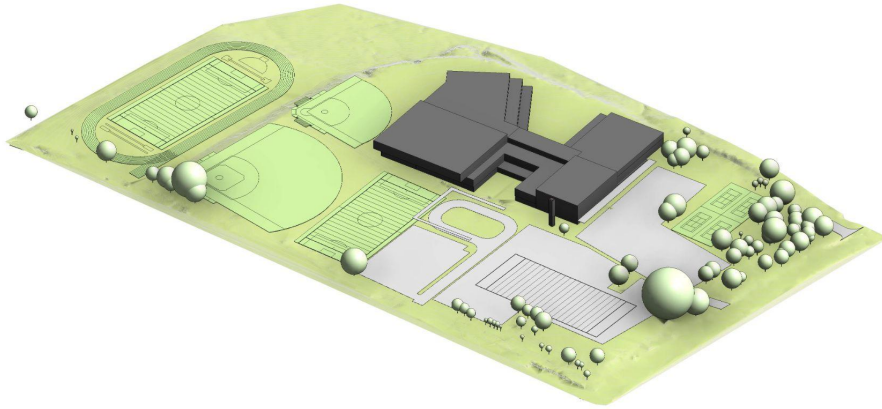
-

inward-looking
daylighting
scale

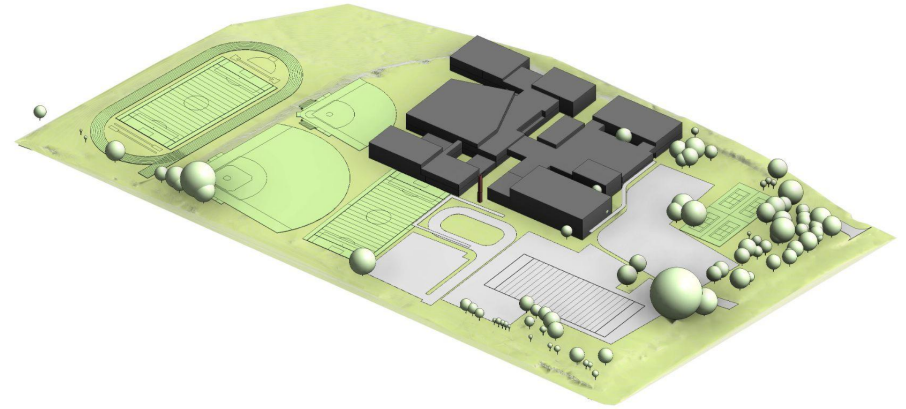
?

new tower
outdoor circulation

Light Courts



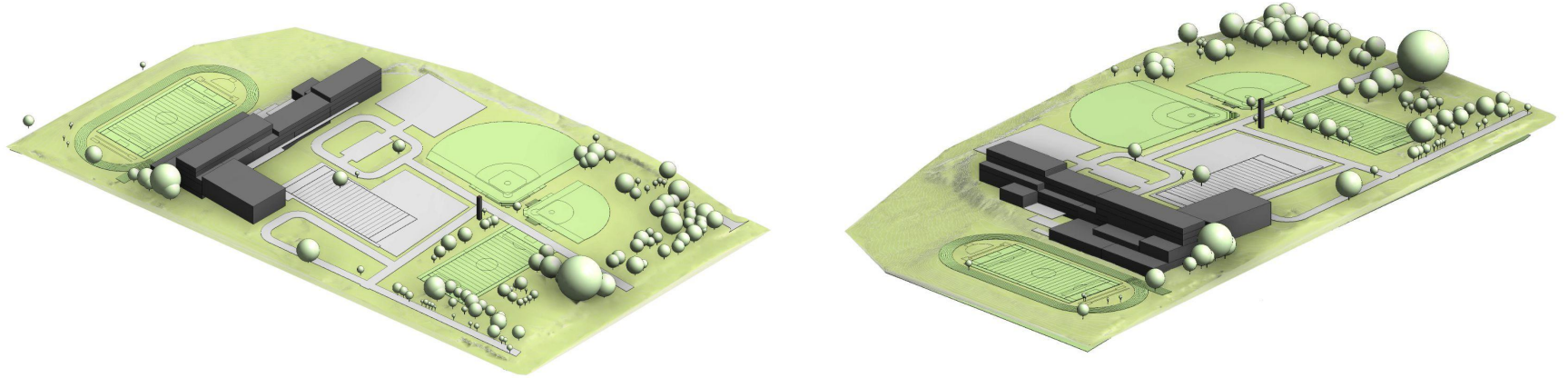
Light Courts / 2



Light Courts / Many

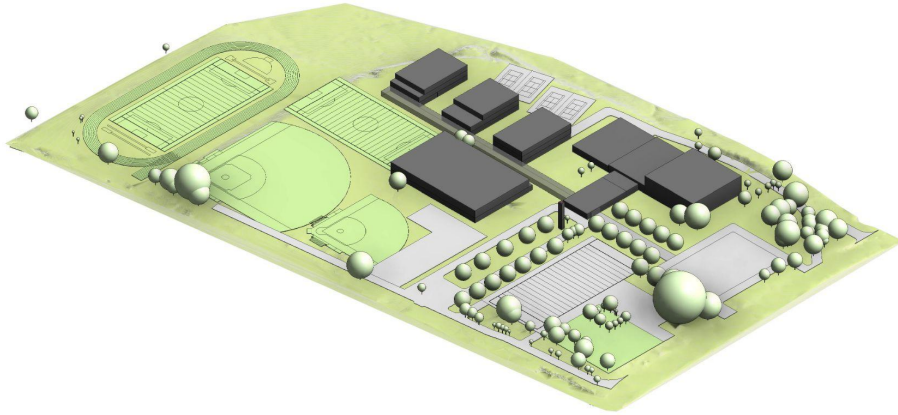
Overview

Overview

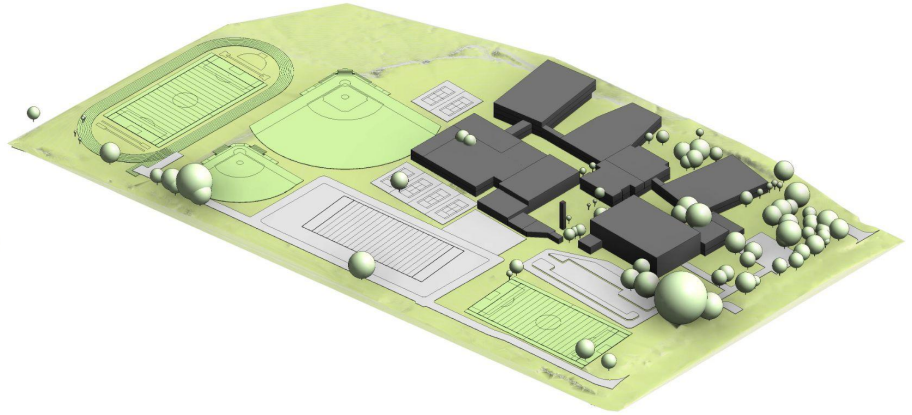


Hillside Terrace

Overview

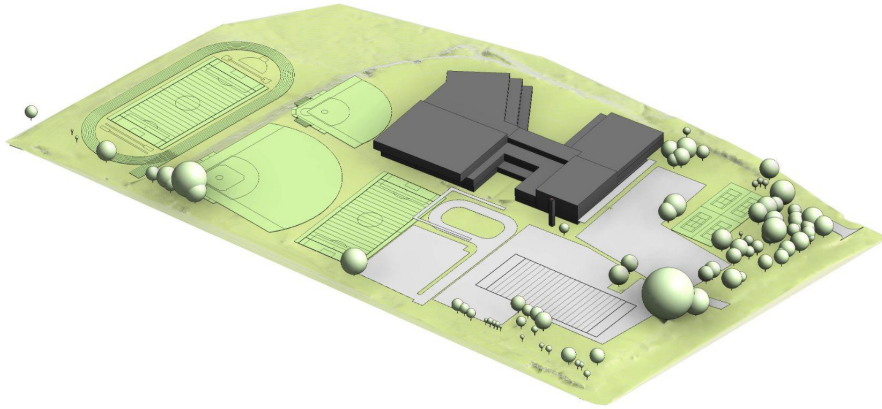


Natural Edge / Spine

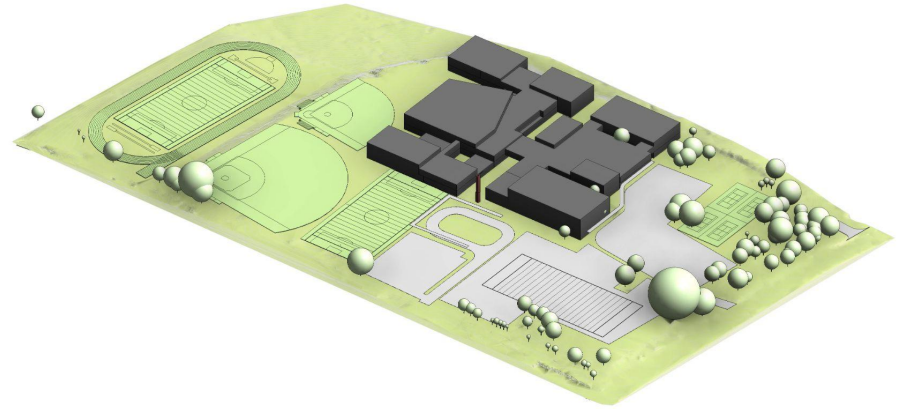


Natural Edge / Courtyards

Overview



Light Courts / 2

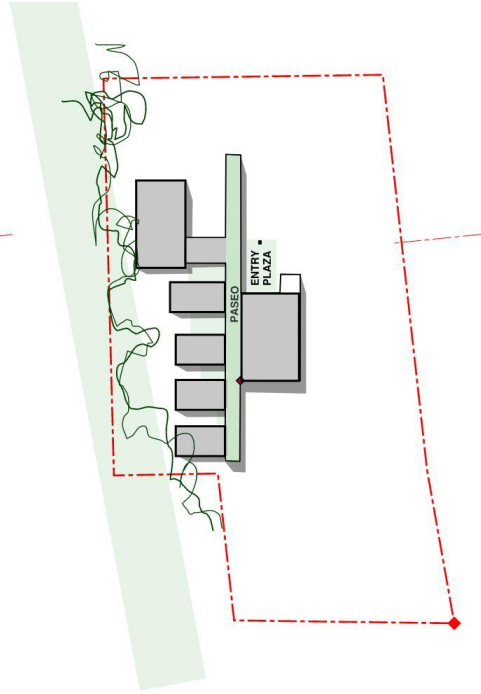


Light Courts / Many

Hillside



Edge



Courts

